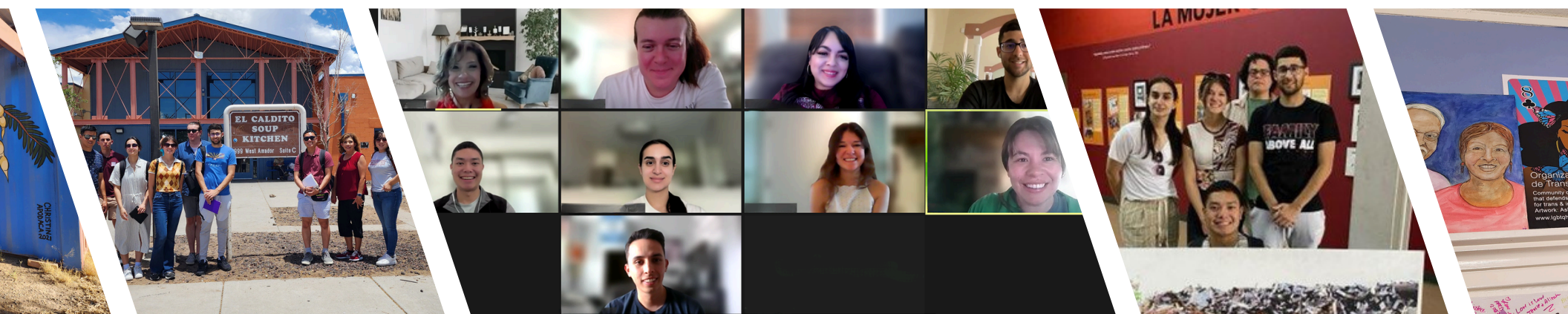


ALL VIRTUAL

COMMUNITY HEALTH FIELD EXPERIENCE

FOR UW MASTER'S STUDENTS IN HEALTH-RELATED FIELDS



JULY 7, 2025 - JULY 14, 2025

The *Partnership for the Advancement of Cancer Research*, a collaboration between New Mexico State University and Fred Hutch, is excited to offer an immersive virtual experience. This program is designed to educate students about the communities throughout the Pacific Northwest and Southern regions, providing an in-depth exploration of health disparities.

For more information, including eligibility and how to apply, visit: cancer.nmsu.edu/hefe

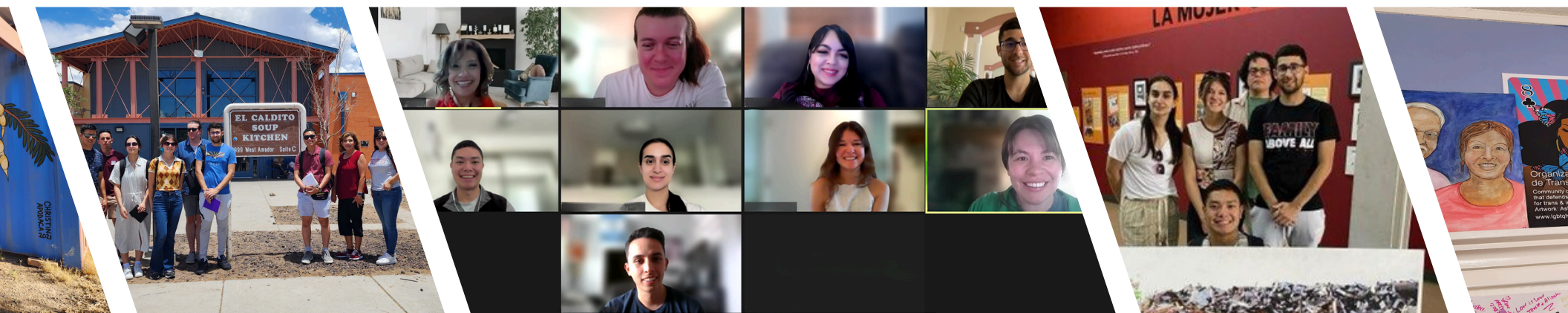
APPLICATION DEADLINE: May 9, 2025



ALL VIRTUAL

COMMUNITY HEALTH FIELD EXPERIENCE

FOR NMSU MASTER'S STUDENTS IN HEALTH-RELATED FIELDS



JULY 7, 2025 - JULY 14, 2025

The *Partnership for the Advancement of Cancer Research*, a collaboration between New Mexico State University and Fred Hutch, is excited to offer an immersive virtual experience. This program is designed to educate students about the communities throughout the Pacific Northwest and Southern regions, providing an in-depth exploration of health disparities.

For more information, including eligibility and how to apply, visit: cancer.nmsu.edu/hefe

APPLICATION DEADLINE: May 9, 2025

